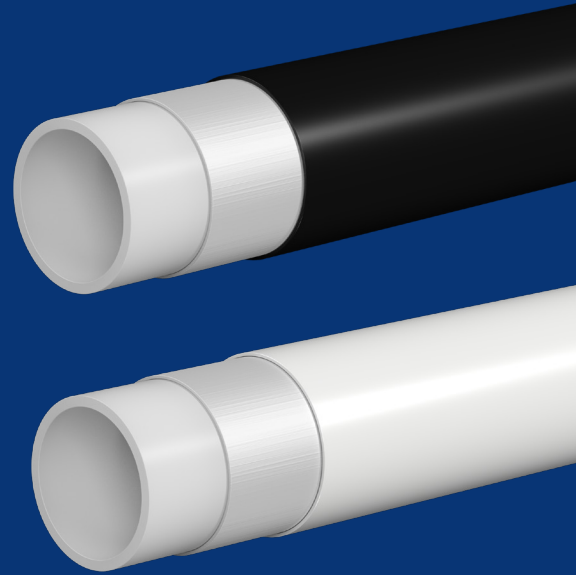




## MT Supertube

- Ø20mm and Ø25mm
- Excellent screening performance
- Suitable for rail, marine and tunnel applications
- ZERO WASTE: available in coils of up to 100 metres, meaning fewer fittings per installation
- Longer lengths also prevent ingress of water
- Extra security from data interference
- Suitable for in-screed applications
- Withstands temperatures from  $-45^{\circ}\text{C}$  to  $+120^{\circ}\text{C}$
- Nail penetration: MT Supertube complies with requirements of the current version of BS 7671, BS EN 61386-1:2008



### Contractor cost & labour saving example (based on contractor purchase price)

Costs calculated on using 100m of 20mm conduit with 8 off  $90^{\circ}$  bends and estimated manpower costs of £45 per hour.

#### Galvanised steel

##### Material cost

@ £7.26 per metre + fittings = £738.40

##### Labour

@ 30 mins per metre = 2 metres per hour

50 hours @ £45.00 = £2250.00

**Galvanised steel overall costs = £2988.40**

#### MT Supertube

##### Material cost

@ £4.97 per metre + fittings = £526.76

##### Labour

@ 10 mins per metre = 6 metres per hour

16.67 hours @ £45.00 = £750.15

**MT Supertube overall costs = £1276.91**

The savings on this job amount to £1711.49

**MT Supertube is 57.27% cheaper than galvanised steel**

It is also possible to reduce overall project costs by using MT Supertube as it can be bent into position by hand therefore reducing the need for as many fittings.

#### Marshall-Tufflex Ltd

55-65 Castleham Road, St Leonards on Sea,  
East Sussex, TN38 9NU

**T:** +44 (0)1424 856600  
[www.marshall-tufflex.com](http://www.marshall-tufflex.com)